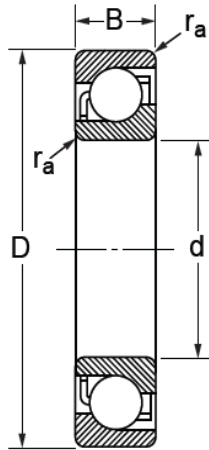


# Angular Contact Ball Bearing

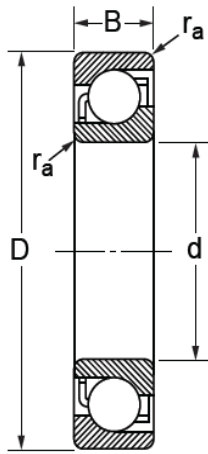


Suffix:

- A : 30 degree contact angel
- AC : 25 degree contact angel
- B : 40 degree contact angel
- C : 15 degree contact angel
- TN : Nylon cage
- M : Brass cage

Single Row Angular Contact Ball Bearing														
Bearing No.			dxDxB (mm)			Weight(kg)	Bearing No.			dxDxB (mm)				
7300C	7300AC	7300B	10	35	11	0.057	71800	10	19	5	71900	10	22	6
7301C	7301AC	7301B	12	37	12	0.070	71801	12	21	5	71901	12	24	6
7302C	7302AC	7302B	15	42	13	0.090	71802	15	24	5	71902	15	28	7
7303C	7303AC	7303B	17	47	14	0.110	71803	17	25	5	71903	17	30	7
7304C	7304AC	7304B	20	52	15	0.140	71804	20	32	7	71904	20	37	9
7305C	7305AC	7305B	25	62	17	0.230	71805	25	37	7	71905	25	42	9
7306C	7306AC	7306B	30	72	19	0.340	71806	30	42	7	71906	30	17	9
7307C	7307AC	7307B	35	80	21	0.450	71807	35	47	7	71907	35	55	10
7308C	7308AC	7308B	40	90	23	0.630	71808	40	52	7	71908	40	62	12
7309C	7309AC	7309B	45	100	25	0.850	71809	45	58	7	71909	45	68	12
7310C	7310AC	7310B	50	110	27	1.100	71810	50	65	7	71910	50	72	12
7311C	7311AC	7311B	55	120	29	1.400	71811	55	72	9	71911	55	80	13
7312C	7312AC	7312B	60	130	31	1.750	71812	60	78	10	71912	60	85	13
7313C	7313AC	7313B	65	140	33	2.150	71813	65	85	10	71913	65	90	13
7314C	7314AC	7314B	70	150	35	2.650	71814	70	90	10	71914	70	100	16
7315C	7315AC	7315B	75	160	37	3.200	71815	75	95	10	71915	75	105	16
7316C	7316AC	7316B	80	170	39	3.800	71816	80	100	10	71916	80	110	16
7317C	7317AC	7317B	85	180	41	4.450	71817	85	110	13	71917	85	120	18
7318C	7318AC	7318B	90	190	43	5.200	71818	90	115	13	71918	90	115	18
7319C	7319AC	7319B	95	200	45	6.050	71819	95	120	13	71919	95	130	18
7320C	7320AC	7320B	100	215	47	7.500	71820	100	125	13	71920	100	140	20
7321C	7321AC	7321B	105	225	49	10.00	71821	105	130	13	71921	105	145	20
7322C	7322AC	7322B	110	240	50	11.26	71822	110	140	16	71922	110	150	20
7324C	7324AC	7324B	120	260	55	13.50	71824	120	150	16	71924	120	165	22
7326C	7326AC	7326B	130	280	58	17.40	71826	130	165	18	71926	130	180	24
7328C	7328AC	7328B	140	300	62	21.50	71828	140	175	18	71928	140	190	24
7330C	7330AC	7330B	150	320	65	25.10	71830	150	190	20	71930	150	210	28
7332C	7332AC	7332B	160	340	68	30.20	71832	160	200	20	71932	160	220	28
7334C	7334AC	7334B	170	360	72	35.70	71834	170	215	22	71934	170	230	28
7336C	7336AC	7336B	180	380	75	41.30	71836	180	225	22	71936	180	250	33
7338C	7338AC	7338B	190	400	78	47.60	71838	190	240	24	71938	190	260	33
7340C	7340AC	7340B	200	420	80	53.70	71840	200	250	24	71940	200	280	38
							718/500	500	620	56	71944	220	300	38

# Angular Contact Ball Bearing

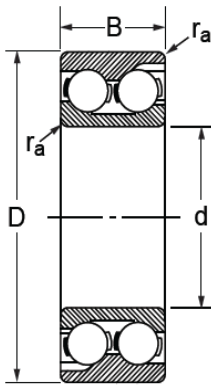


Suffix:  
 A : 30 degree contact angel  
 AC : 25 degree contact angel  
 B : 40 degree contact angel  
 C : 15 degree contact angel  
 TN : Nylon cage  
 M : Brass cage

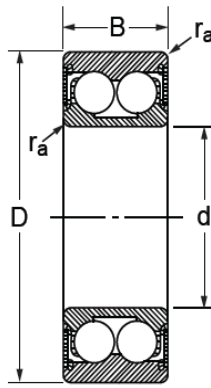
## Single Row Angular Contact Ball Bearing

Bearing No.			dxDxB (mm)			Weight(kg)	Bearing No.			dxDxB (mm)			Weight(kg)
7000C	7000AC	7000B	10	26	8	0.018	7200C	7200AC	7200B	10	30	9	0.030
7001C	7001AC	7001B	12	28	8	0.020	7201C	7201AC	7201B	12	32	10	0.036
7002C	7002AC	7002B	15	32	9	0.029	7202C	7202AC	7202B	15	35	11	0.045
7003C	7003AC	7003B	17	35	10	0.035	7203C	7203AC	7203B	17	40	12	0.065
7004C	7004AC	7004B	20	42	12	0.080	7204C	7204AC	7204B	20	47	14	0.110
7005C	7005AC	7005B	25	47	12	0.093	7205C	7205AC	7205B	25	52	15	0.130
7006C	7006AC	7006B	30	55	13	0.135	7206C	7206AC	7206B	30	62	16	0.200
7007C	7007AC	7007B	35	62	14	0.180	7207C	7207AC	7207B	35	72	17	0.280
7008C	7008AC	7008B	40	68	15	0.222	7208C	7208AC	7208B	40	80	18	0.370
7009C	7009AC	7009B	45	75	16	0.282	7209C	7209AC	7209B	45	85	19	0.420
7010C	7010AC	7010B	50	80	16	0.306	7210C	7210AC	7210B	50	90	20	0.470
7011C	7011AC	7011B	55	90	18	0.447	7211C	7211AC	7211B	55	100	21	0.620
7012C	7012AC	7012B	60	95	18	0.478	7212C	7212AC	7212B	60	110	22	0.800
7013C	7013AC	7013B	65	100	18	0.509	7213C	7213AC	7213B	65	120	23	1.000
7014C	7014AC	7014B	70	110	20	0.705	7214C	7214AC	7214B	70	125	24	1.100
7015C	7015AC	7015B	75	115	20	0.745	7215C	7215AC	7215B	75	130	25	1.200
7016C	7016AC	7016B	80	125	22	0.994	7216C	7216AC	7216B	80	140	26	1.450
7017C	7017AC	7017B	85	130	22	1.040	7217C	7217AC	7217B	85	150	28	1.850
7018C	7018AC	7018B	90	140	24	1.350	7218C	7218AC	7218B	90	160	30	2.300
7019C	7019AC	7019B	95	145	24	1.410	7219C	7219AC	7219B	95	170	32	2.700
7020C	7020AC	7020B	100	150	24	1.470	7220C	7220AC	7220B	100	180	34	3.300
7021C	7021AC	7021B	10	30	9	1.620	7221C	7221AC	7221B	105	190	36	3.816
7022C	7022AC		110	170	28	2.160	7222C	7222AC	7222B	110	200	38	4.500
7024C	7024AC		120	180	28	3.110	7224C	7224AC	7224B	120	215	40	5.600
7026C	7026AC		130	200	33	3.910	7226C	7226AC	7226B	130	230	40	7.300
7028C	7028AC		140	210	33	4.200	7228C	7228AC	7228B	140	250	42	9.000
7030C	7030AC		150	225	35	5.000	7230C	7230AC	7230B	150	270	45	11.00
7032C	7032AC		160	240	38	5.440	7232C	7232AC	7232B	160	290	48	14.50
7034C	7034AC		170	260	42	8.270	7234C	7234AC	7234B	170	310	52	16.50
7036C	7036AC		180	280	46	10.900	7236C	7236AC	7236B	180	320	52	18.10
7038C	7038AC		190	290	46	11.200	7238C	7238AC	7238B	190	340	55	20.00
7040C	7040AC		200	310	51	14.900	7240C	7240AC	7240B	200	360	58	24.00
7044C	7044AC		220	340	56	16.200	7244C	7244AC	7244B	220	400	65	36.10

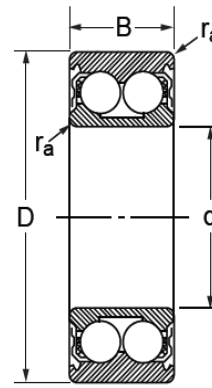
# Angular Contact Ball Bearing



OPEN



SEALS 2RS



SHIELDS - ZZ

\*Remarks: 3200 / 3300 series same as 5200 / 5300 series

## Double Row Angular Contact Ball Bearing

Bearing No.			dxDxB (mm)			Weight(kg)	Bearing No.			dxDxB (mm)			Weight(kg)
3200	3200 ZZ	3200 2RS	10	30	14.3	0.049							
3201	3201 ZZ	3201 2RS	12	32	15.9	0.057							
3202	3202 ZZ	3202 2RS	15	35	15.9	0.064	3302	3302 ZZ	3302 2RS	15	42	19	0.132
3203	3203 ZZ	3203 2RS	17	40	17.5	0.095	3303	3303 ZZ	3303 2RS	17	47	22.2	0.180
3204	3204 ZZ	3204 2RS	20	47	17.5	0.150	3304	3304 ZZ	3304 2RS	20	52	22.2	0.217
3205	3205 ZZ	3205 2RS	25	52	20.6	0.175	3305	3305 ZZ	3305 2RS	5	62	25.4	0.362
3206	3206 ZZ	3206 2RS	30	62	23.8	0.286	3306	3306 ZZ	3306 2RS	30	72	30.2	0.553
3207	3207 ZZ	3207 2RS	35	72	27	0.436	3307	3307 ZZ	3307 2RS	35	80	34.9	0.766
3208	3208 ZZ	3208 2RS	40	80	30.2	0.590	3308	3308 ZZ	3308 2RS	40	90	36.5	1.010
3209	3209 ZZ	3209 2RS	45	85	30.2	0.640	3309	3309 ZZ	3309 2RS	45	100	39.7	1.340
3210	3210 ZZ	3210 2RS	50	90	30.2	0.690	3310	3310 ZZ	3310 2RS	50	110	44.4	1.810
3211	3211 ZZ	3211 2RS	55	100	33.3	0.986	3311	3311 ZZ	3311 2RS	55	120	49.2	2.320
3212	3212 ZZ	3212 2RS	60	110	36.5	1.270	3312	3312 ZZ	3312 2RS	60	130	54	3.050
3213	3213 ZZ	3213 2RS	65	120	38.1	1.560	3313	3313 ZZ	3313 2RS	65	140	58.7	3.960
3214	3214 ZZ	3214 2RS	70	125	39.7	1.800	3314	3314 ZZ	3314 2RS	70	150	63.5	4.740
3215			75	130	41.3	2.100	3315			76	160	48.3	6.150
3216			80	140	44.4	2.650	3316			80	170	68.3	6.950
3217			85	150	49.2	3.400	3317			85	180	73	8.300
3218			90	160	52.4	4.150	3318			90	190	73	9.250
3219			95	170	55.6	5.000	3319			95	200	77.8	11.000
3220			100	180	60.3	6.100	3320			100	215	82.6	13.500
3222			110	200	69.8	8.800	3322			110	240	92.1	19.000