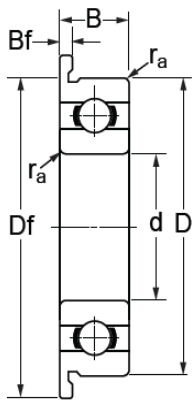
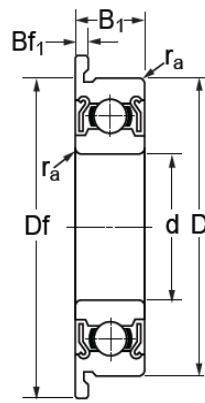


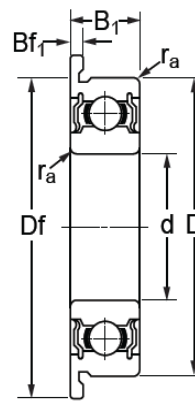
Flanged Ball Bearing



Flange



Flange with Shields - ZZ



Flange with Seals - 2RS

Flange types

Bearing No.	Basic Dimensions (mm)							Weight(kg)	Designation			
	d	D	B	B1	Df	Bf	Bf1					
FR144	3.18	6.35	2.38	2.78	7.5	0.58	0.787	0.00031	FR144 Z	FR144 ZZ		
FR2	3.18	9.525	3.967	3.97	11	0.76	0.762	0.00151	FR2 Z	FR2 ZZ		
FR155	3.97	7.938	2.779	3.18	9.1	0.58	0.914	0.00059	FR155 Z	FR 155 ZZ		
FR168	6.53	9.525	3.175	3.18	11	0.58	0.914	0.00065	FR168 Z	FR168 ZZ	FR168 RS	FR168 2RS
FR188	6.53	12.7	3.175	4.76	14	0.58	1.143	0.00164	FR188 Z	FR188 ZZ	FR188 RS	FR188 2RS
F682	2	5	1.5	2.3	6.1	0.5	0.6	0.00016	F682 Z	F682 ZZ		
F602	2	7	2.8	3.5	8.5	0.7	0.9	0.00060	F602 Z	F602 ZZ		
F603	3	9	3	5	11	0.7	0.9	0.00100	F603 Z	F603 ZZ		
F623	3	10	4	4	12	1.0	1.0	0.00185	F623 Z	F623 ZZ		
F674	4	7	2	2.5	8.2	0.6	0.6	0.00029	F674 Z	F674 ZZ		
F684	4	9	2.5	4	10	0.6	1.0	0.00070	F684 Z	F684 ZZ		
F694	4	11	4	4	13	1.0	1.0	0.00191	F694 Z	F694 ZZ		
F604	4	12	4	4	14	1.0	1.0	0.00253	F604 Z	F604 ZZ	F604 RS	F604 2RS
F624	4	13	5	5	15	1.0	1.0	0.00338	F624 Z	F624 ZZ	F624 RS	F624 2RS
F632	4	16	5	5	18	1.0	1.0	0.00573	F632 Z	F632 ZZ	F632 RS	F632 2RS
F675	5	8	2	2.5	9.2	0.6	0.6	0.00033	F675 Z	F675 ZZ		
F605	5	14	5	5	16	1.0	1.0	0.00039	F605 Z	F605 ZZ	F605 RS	F605 2RS
F695	5	13	4	4	15	1.0	1.0	0.00279	F695 Z	F695 ZZ	F695 RS	F695 2RS
F606	6	17	6	6	19	1.2	1.2	0.0069	F606 Z	F606 ZZ	F606 RS	F606 2RS
F607	7	19	6	6	22	1.5	1.5	0.0082	F607 Z	F607 ZZ	F607 RS	F606 2RS
F608	8	22	7	7	25	1.5	1.5	0.0129	F608 Z	F608 ZZ	F608 RS	F606 2RS
F625	5	16	5	5	18	1.0	1.0	0.0051	F625 Z	F625 ZZ	F625 RS	F625 2RS
F626	6	19	6	6	22	1.5	1.5	0.0086	F626 Z	F626 ZZ	F626 RS	F625 2RS
F627	7	22	7	7	25	1.5	1.5	0.0131	F627 Z	F627 ZZ	F627 RS	F625 2RS
F686	6	13	5	5	15	1.0	1.1	0.0027	F686 Z	F686 ZZ	F686 RS	F686 2RS
F687	7	14	5	5	16	1.0	1.1	0.0030	F687 Z	F687 ZZ	F687 RS	F687 2RS
F688	8	16	5	5	18	1.0	1.1	0.0038	F688 Z	F688 ZZ	F688 RS	F688 2RS
F689	9	17	5	5	19	1.0	1.1	0.0440	F689 Z	F689 ZZ	F689 RS	F689 2RS
F696	6	15	5	5	17	1.2	1.2	0.0036	F696 Z	F696 ZZ	F696 RS	F696 2RS
F697	7	17	5	5	19	1.2	1.2	0.0050	F697 Z	F697 ZZ	F697 RS	F697 2RS
F698	8	19	6	6	22	1.5	1.5	0.0076	F698 Z	F698 ZZ	F698 RS	F698 2RS
F699	9	20	6	6	23	1.5	1.5	0.0085	F699 Z	F699 ZZ	F699 RS	F699 2RS