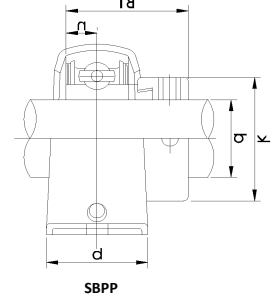
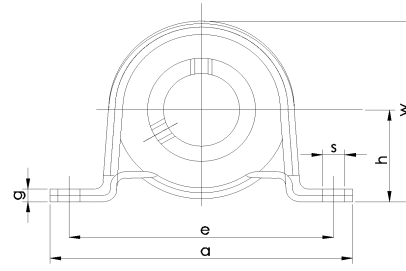
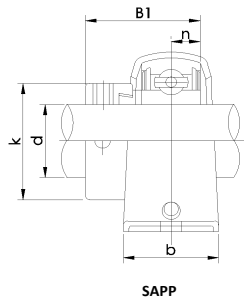
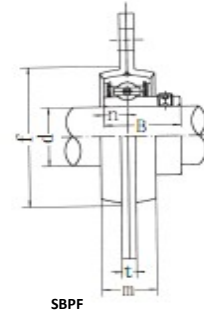
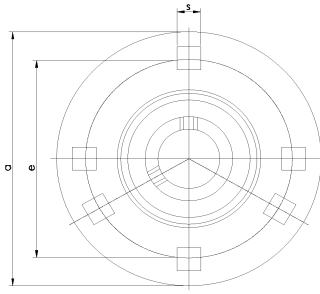
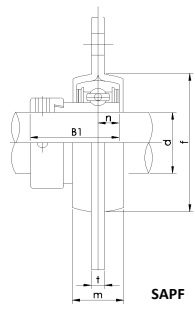


Pressed steel bearing unit Light duty



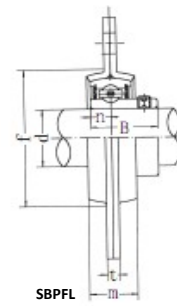
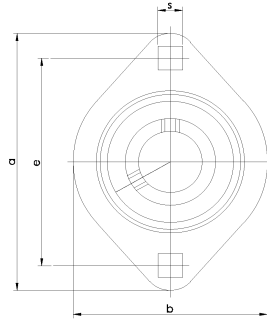
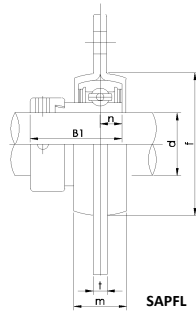
Unit No.	Dimensions (mm / inch)									Bolt Size	SAPP		Bearing No. mm inch	Weight (kg)	SBPP		Bearing No. mm inch	Weight (kg)	Housing
	d	h	a	e	b	s	g	w	B1		n	B1			n				
SAPP SBPP 201 201-8	12 1/2	22.2 7/8	86 3-3/8	68 2-43/64	25 63/64	9.5 3/8	3.2 0.126	43.8 1-23/32	M8 5/16	28.6 1.126	6.5 0.2559	SA201 SA201-8	0.19	22 0.8661	6 0.2362	SB201 SB201-8	0.16	PP203	
SAPP SBPP 202 202-9 202-10	15 9/16 5/8	22.2 7/8	86 3-3/8	68 2-43/64	25 63/64	9.5 3/8	3.2 0.126	43.8 1-23/32	M8 5/16	28.6 1.126	6.5 0.2559	SA202 SA202-9 SA202-10	0.19	22 0.8661	6 0.2362	SB202 SB202-9 SB202-10	0.16	PP203	
SAPP SBPP 203 203-11	17 11/16	22.2 7/8	86 3-3/8	68 2-43/64	25 63/64	9.5 3/8	3.2 0.126	43.8 1-23/32	M8 5/16	28.6 1.126	6.5 0.2559	SA203 SA203-11	0.19	22 0.8661	6 0.2362	SB203 SB203-11	0.16	PP203	
SAPP SBPP 204 204-12	20 3/4	25.4 1	98 3-27/32	76 2-63/64	32 1-1/4	9.5 3/8	3.2 0.126	50.5 1-63/64	M8 5/16	31 1.2204	7.5 0.2953	SA204 SA204-12	0.23	25 0.9843	7 0.2756	SB204 SB204-12	0.23	PP204	
SAPP SBPP 205 205-13 205-14 205-15 205-16	25 13/16 7/8 15/16 1	28.6 1-1/8	108 4-1/4	86 3-25/64	32 1-1/4	11.5 29/64	4 0.157	56.6 2-15/64	M10 3/8	31 1.2204	7.5 0.2953	SA205 SA205-13 SA205-14 SA205-15 SA205-16	0.32	27 1.063	7.5 0.2953	SB205 SB205-13 SB205-14 SB205-15 SB205-16	0.28	PP205	
SAPP SBPP 206 206-17 206-18 206-19 206-20	30 1-1/16 1-1/8 1-3/16 1-1/4	33.3 1-5/16	117 4-39/64	95 3-47/64	38 1-1/2	11.5 29/64	4 0.157	66.3 2-39/64	M10 3/8	35.7 1.4055	9 0.3543	SA206 SA206-17 SA206-18 SA206-19 SA206-20	0.50	30 1.1811	8 0.315	SB206 SB206-17 SB206-18 SB206-19 SB206-20	0.47	PP206	
SAPP SBPP 207 207-20 207-21 207-22 207-23	35 1-1/4 1-5/16 1-3/8 1-7/16	39.7 1-9/16	129 5-5/64	106 4-5/32	42 1-21/32	11.5 29/64	4.6 0.181	78 3-1/8	M10 3/8	38.9 1.5315	9.5 0.374	SA207 SA207-20 SA207-21 SA207-22 SA207-23	0.71	32 1.2598	8.5 0.3346	SB207 SB207-20 SB207-21 SB207-22 SB207-23	0.57	PP207	
SAPP SBPP 208 208-24 208-25	40 1-1/2 1-9/16	43.7 1-23/32	148 5-53/64	120 4-47/64	43 1-11/16	13 33/64	5 0.197	86.2 3-25/64	M12 7/16	43.7 1.7205	11 0.433	SA208 SA208-24 SA208-25	0.91	34 1.3386	9 0.354	SB208 SB208-24 SB208-25	0.78	PP208	
SAPP SBPP 209 209-26 209-27 209-28	45 1-5/8 1-11/16 1-3/4	46.8 1-27/32	156 6-9/64	128 5-3/64	45 1-25/32	13 33/64	6 0.236	92.3 3-41/64	M12 7/16	43.7 1.7205	11 0.433	SA209 SA209-26 SA209-27 SA209-28	1.09	41.2 1.622	10.2 0.402	SB209 SB209-26 SB209-27 SB209-28	1.02	PP209	

Pressed steel bearing unit Light duty



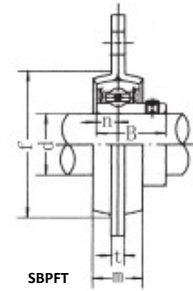
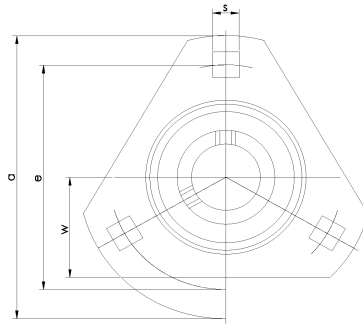
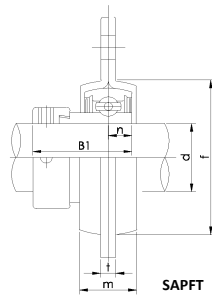
Unit No.	Dimensions (mm / inch)							Bolt Size	SAPF		Bearing No. mm inch	Weight (kg)	SBPF		Bearing No. mm inch	Weight (kg)	Housing
	d	a	e	m	sn	t	f(min)		B1	n			B1	n			
SAPF SBPF 201 201-8	12 1/2	81 3-3/16	63.5 2-1/2	14 9/16	7.1 9/32	4 0.157	49 1-59/64	M6 1/4	28.6 1.126	6.5 0.2559	SA201 SA201-8	0.30	22 0.8661	6 0.2362	SB201 SB201-8	0.27	PF203
	SAPF SBPF 202 202-9 202-10	15 9/16 5/8	81 3-3/16	63.5 2-1/2	14 9/16	7.1 9/32	4 0.157	49 1-59/64	M6 1/4	28.6 1.126	6.5 0.2559	SA202 SA202-9 SA202-10	0.30	22 0.8661	6 0.2362	SB202 SB202-9 SB202-10	0.27
SAPF SBPF 203 203-11		17 11/16	81 3-3/16	63.5 2-1/2	14 9/16	7.1 9/32	4 0.157	49 1-59/64	M6 1/4	28.6 1.126	6.5 0.2559	SA203 SA203-11	0.30	22 0.8661	6 0.2362	SB203 SB203-11	0.27
	SAPF SBPF 204 204-12	20 3/4	90 3-35/64	71.5 2-13/16	16 5/8	9 23/64	4 0.157	56 2-13/64	M8 5/16	31 1.2204	7.5 0.2953	SA204 SA204-12	0.33	25 0.9843	7 0.2756	SB204 SB204-12	0.33
SAPF SBPF 205 205-13 205-14 205-15 205-16		25 13/16	95 3-3/4	76 2-63/64	18 23/32	9 23/64	4 0.157	60 2-23/64	M8 5/16	31 1.2204	7.5 0.2953	SA205 SA205-13 SA205-14 SA205-15 SA205-16	0.42	27 1.063	7.5 0.2953	SB205 SB205-13 SB205-14 SB205-15 SB205-16	0.38
	7/8																
	15/16																
	1																
	1																
SAPF SBPF 206 206-17 206-18 206-19 206-20	30 1-1/16	113 4-7/16	90.5 3-9/16	18 23/32	11 7/16	5.2 0.205	71 2-51/64	M10 3/8	35.7 1.4055	9 0.3543	SA206 SA206-17 SA206-18 SA206-19 SA206-20	0.65	30 1.1811	8 0.315	SB206 SB206-17 SB206-18 SB206-19 SB206-20	0.62	PF206
	1-1/8																
	1-3/16																
	1-1/4																
	1-1/4																
SAPF SBPF 207 207-20 207-21 207-22 207-23	35 1-1/4	122 4-13/16	100 3-15/16	20 25/32	11 7/16	5.2 0.205	81 3-7/8	M10 3/8	38.9 1.5315	9.5 0.374	SA207 SA207-20 SA207-21 SA207-22 SA207-23	0.90	32 1.2598	8.5 0.3346	SB207 SB207-20 SB207-21 SB207-22 SB207-23	0.82	PF207
	1-5/16																
	1-3/8																
	1-7/16																
	1-7/16																
SAPF SBPF 208 208-24 208-25	40 1-1/2 1-9/16	148 5-13/16	119 4-11/16	21 13/16	13.5 17/32	6.8 268	91 3-37/64	M12 1/2	43.7 1.7205	11 0.4331	SA208 SA208-24 SA208-25	1.16	34 1.3386	9 0.3543	SB208 SB208-24 SB208-25	1.10	PF208
	1-9/16																
	1-9/16																
SAPF SBPF 209 209-26 209-27 209-28	45 1-5/8	150 5-29/32	120.5 4-3/4	23 29/32	13.5 17/32	6.8 0.268	98 3-55/64	M12 1/2	43.7 1.7205	11 0.433	SA209 SA209-26 SA209-27 SA209-28	1.34	41.2 1.622	10.2 0.402	SB209 SB209-26 SB209-27 SB209-28	1.17	PF209
	1-11/16																
	1-3/4																
	1-3/4																
SAPF SBPF 210 210-29 210-30 210-31 210-32	50 1-13/16	157 6-3/16	127 5	25 63/64	13.5 17/32	8 0.315	102 4-1/64	M12 1/2	43.7 1.7205	11 0.433	SA210 SA210-29 SA210-30 SA210-31 SA210-32	1.62	43.5 1.7126	10.9 0.429	SB210 SB210-29 SB210-30 SB210-31 SB210-32	1.53	PF210
	1-7/8																
	1-15/16																
	2																
	2																
SAPF SBPF 211 211-32 211-33 211-34 211-35	55 2 2-1/16 2-1/8 2-3/16	168 6-5/8	138 5-7/16	26 1-1/64	13.5 17/32	8 0.315	113 4-29/64	M12 1/2	48.4 1.9055	12 0.472	SA211 SA211-32 SA211-33 SA211-34 SA211-35	2.03	45.3 1.7835	11.8 465	SB211 SB211-32 SB211-33 SB211-34 SB211-35	1.88	PF211
	2																
	2-1/16																
	2-1/8																
	2-3/16																
SAPF SBPF 212 212-36 212-37 212-38 212-39	60 2-1/4 2-5/16 2-3/8 2-7/16	177 6-31/32	148 5-53/64	28 1-7/64	13.5 17/32	8 0.315	122 4-13/16	M12 1/2	53.1 2.0906	13.5 0.531	SA212 SA212-36 SA212-37 SA212-38 SA212-39	2.45	53.7 2.1142	14.9 0.587	SB212 SB212-36 SB212-37 SB212-38 SB212-39	2.31	PF212
	2-1/4																
	2-5/16																
	2-3/8																
	2-7/16																

Pressed steel oval bearing unit Light duty



Unit No.	Dimensions (mm / inch)									Bolt Size	SAPFL		Bearing No. mm inch	Weight (kg)	SBPFL		Bearing No. mm inch	Weight (kg)	Housing
	d	a	e	b	m	S	t	f(min)	B1		n	B1			n				
SAPFL SBPFL																			
201	12	81	63.5	59	14	7.1	4	49	M6	28.6	6.5	SA201	0.22	22	6	SB201	0.19	PFL203	
201-8	1/2	3-3/16	2-1/2	2-21/64	9/16	9/32	0.157	1-59/64	1/4	1.126	0.2559	SA201-8		0.8661	0.2362	SB201-8			
SAPFL SBPFL																			
202	15	81	63.5	59	14	7.1	4	49	M6	1.126	0.2559	SA202	0.22	22	6	SB202	0.19	PFL203	
202-9	9/16	3-3/16	2-1/2	2-21/64	9/16	9/32	0.157	1-59/64	1/4	1.126	0.2559	SA202-9		0.8661	0.2362	SB202-9			
202-10	5/8											SA202-10				SB202-10			
SAPFL SBPFL																			
203	17	81	63.5	59	14	7.1	4	49	M6	1.126	0.2559	SA203	0.22	22	6	SB203	0.19	PFL203	
203-11	11/16	3-3/16	2-1/2	2-21/64	9/16	9/32	0.157	1-59/64	1/4	1.126	0.2559	SA203-11		0.8661	0.2362	SB203-11	0.19		
SAPFL SBPFL																			
204	20	90	71.5	67	16	9	4	56	M8	31	7.5	SA204	0.24	25	7	SB204	0.24	PFL204	
204-12	3/4	3-35/64	2-13/16	2-41/64	5/8	23/64	0.157	2-13/64	5/16	1.2204	0.2953	SA204-12		0.9843	0.2756	SB204-12			
SAPFL SBPFL																			
205	25	95	76	71	18	9	4	60	M8	31	7.5	SA205	0.32	27	7.5	SB205	0.28	PFL205	
205-13	13/16											SA205-13				SB205-13			
205-14	7/8	3-3/4	2-63/64	2-51/64	23/32	23/64	0.157	2-23/64	5/16	1.2204	0.2953	SA205-14		1.063	0.2953	SB205-14			
205-15	15/16											SA205-15				SB205-15			
205-16	1											SA205-16				SB205-16			
SAPFL SBPFL																			
206	30	113	90.5	84	18	11	5.2	71	M10	35.7	9	SA206	0.41	30	8	SB206	0.38	PFL206	
206-17	1-1/16											SA206-17				SB206-17			
206-18	1-1/8	4-7/16	3-9/16	3-5/16	23/32	7/16	0.205	2-51/64	3/8	1.4055	0.3543	SA206-18		1.1811	0.315	SB206-18			
206-19	1-3/16											SA206-19				SB206-19			
206-20	1-1/4											SA206-20				SB206-20			
SAPFL SBPFL																			
207	35	122	100	94	20	11	5.2	81	M10	38.9	9.5	SA207	0.52	32	8.5	SB207	0.50	PFL207	
207-20	1-1/4											SA207-20				SB207-20			
207-21	1-5/16	4-13/16	3-15/16	3-45/64	25/32	7/16	0.205	3-3/16	3/8	1.5315	0.374	SA207-21		1.2598	0.3346	SB207-21			
207-22	1-3/8											SA207-22				SB207-22			
207-23	1-7/16											SA207-23				SB207-23			
SAPFL SBPFL																			
208	40	148	119	100	21	13.5	6.8	91	M12	43.7	11	SA208	0.83	34	9	SB208	0.80	PFL208	
208-24	1-1/2	5-13/16	4-11/16	3-15/16	13/16	17/32	0.268	3-37/64	1/2	1.7205	0.4331	SA208-24		1.3386	0.3543	SB208-24			
208-25	1-9/16											SA208-25				SB208-25			

Pressed steel tringular bearing unit
Light duty



Unit No.	Dimensions (mm / inch)								Bolt Size	SAPFT		Bearing No. mm inch	Weight (kg)	SBPFT		Bearing No. mm inch	Weight (kg)	Housing
	d	a	e	w	m	s	t	f(min)		B1	n			B1	n			
SAPFT SBPFT																		
201	12	81	63.5	28.5	14	7.1	4	49	M6	28.6	6.5	SA201	0.26	22	6	SB201	0.23	PFT203
201-8	1/2	3-3/16	2-1/2	1-1/8	9/16	9/32	0.157	1-59/64	1/4	1.126	0.2559	SA201-8		0.8661	0.2362	SB201-8		
SAPFT SBPFT																		
202	15	81	63.5	28.5	14	7.1	4	49	M6	28.6	6.5	SA202	0.26	22	6	SB202	0.23	PFT203
202-9	9/16	3-3/16	2-1/2	1-1/8	9/16	9/32	0.157	1-59/64	1/4	1.126	0.2559	SA202-9		0.8661	0.2362	SB202-9		
202-10	5/8	3-3/16	2-1/2	1-1/8	9/16	9/32	0.157	1-59/64	1/4	1.126	0.2559	SA202-10		0.8661	0.2362	SB202-10		
SAPFT SBPFT																		
203	17	81	63.5	28.5	14	7.1	4	49	M6	28.6	6.5	SA203	0.26	22	6	SB203	0.23	PFT203
203-11	11/16	3-3/16	2-1/2	1-1/8	9/16	9/32	0.157	1-59/64	1/4	1.126	0.2559	SA203-11		0.8661	0.2362	SB203-11		
SAPFT SBPFT																		
204	20	90	71.5	33	16	9	4	56	M8	31	7.5	SA204	0.28	25	7	SB204	0.28	PFT204
204-12	3/4	3-35/64	2-13/16	1-19/64	5/8	23/64	0.157	2-13/64	5/16	1.2204	0.2953	SA204-12		0.9843	0.2756	SB204-12		
SAPFT SBPFT																		
205	25	95	76	35	18	9	4	60	M8	31	7.5	SA205	0.36	27	7.5	SB205	0.36	PFT205
205-13	13/16	3-3/4	2-63/64	1-3/8	23/32	23/64	0.157	2-23/64	5/16	1.2204	0.2953	SA205-13		1.063	0.2953	SB205-13		
205-14	7/8	3-3/4	2-63/64	1-3/8	23/32	23/64	0.157	2-23/64	5/16	1.2204	0.2953	SA205-14		1.063	0.2953	SB205-14		
205-15	15/16	3-3/4	2-63/64	1-3/8	23/32	23/64	0.157	2-23/64	5/16	1.2204	0.2953	SA205-15		1.063	0.2953	SB205-15		
205-16	1	3-3/4	2-63/64	1-3/8	23/32	23/64	0.157	2-23/64	5/16	1.2204	0.2953	SA205-16		1.063	0.2953	SB205-16		
SAPFT SBPFT																		
206	30	113	90.5	40	18	11	5.2	71	M10	35.7	9	SA206	0.58	30	8	SB206	0.55	PFT206
206-17	1-1/16	4-7/16	3-9/16	1-37/64	23/32	7/16	0.205	2-51/64	3/8	1.4055	0.3543	SA206-17		1.1811	0.315	SB206-17		
206-18	1-1/8	4-7/16	3-9/16	1-37/64	23/32	7/16	0.205	2-51/64	3/8	1.4055	0.3543	SA206-18		1.1811	0.315	SB206-18		
206-19	1-3/16	4-7/16	3-9/16	1-37/64	23/32	7/16	0.205	2-51/64	3/8	1.4055	0.3543	SA206-19		1.1811	0.315	SB206-19		
206-20	1-1/4	4-7/16	3-9/16	1-37/64	23/32	7/16	0.205	2-51/64	3/8	1.4055	0.3543	SA206-20		1.1811	0.315	SB206-20		
SAPFT SBPFT																		
207	35	122	100	44.5	20	11	5.2	81	M10	38.9	9.5	SA207	0.82	32	8.5	SB207	0.74	PFT207
207-20	1-1/4	4-13/16	3-15/16	1-3/4	25/32	7/16	0.205	3-3/16	3/8	1.5315	0.374	SA207-20		1.2598	0.3346	SB207-20		
207-21	1-5/16	4-13/16	3-15/16	1-3/4	25/32	7/16	0.205	3-3/16	3/8	1.5315	0.374	SA207-21		1.2598	0.3346	SB207-21		
207-22	1-3/8	4-13/16	3-15/16	1-3/4	25/32	7/16	0.205	3-3/16	3/8	1.5315	0.374	SA207-22		1.2598	0.3346	SB207-22		
207-23	1-7/16	4-13/16	3-15/16	1-3/4	25/32	7/16	0.205	3-3/16	3/8	1.5315	0.374	SA207-23		1.2598	0.3346	SB207-23		